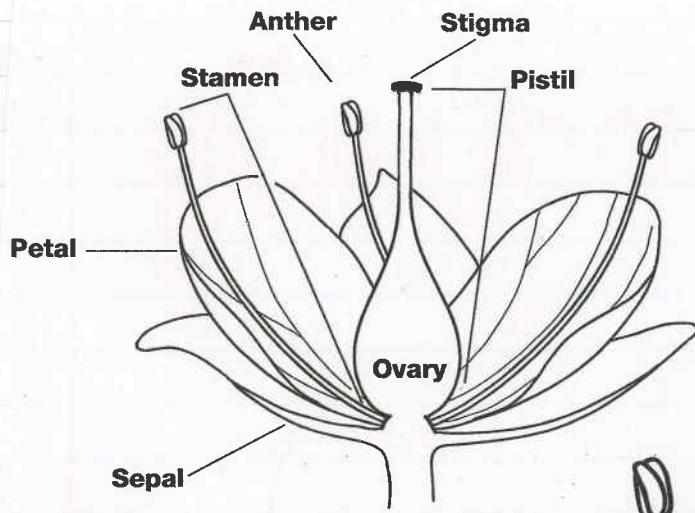


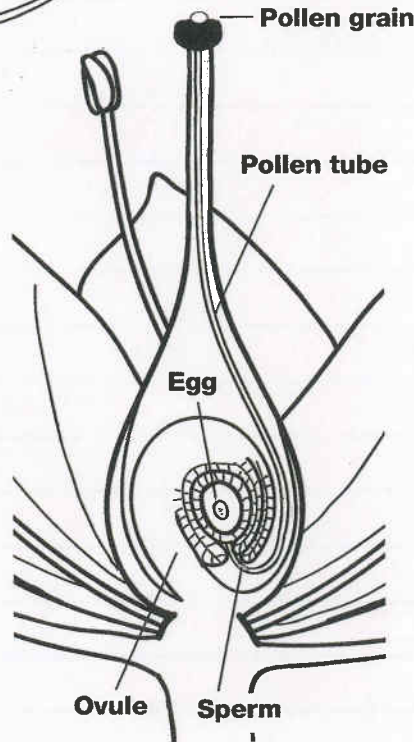


# Flower Power

7.1



Simple flower



Flower  
Parts

After listening to pollination story, write two questions &/or two facts you learned.

1)

2)

7.1

## "The Life Cycle of a Flowering Plant"

\* During video (5:03), write words and/or phrases that catch your attention or seem important/interesting. Page should be mostly full.

- make eggs → develop into seeds
- meiosis
- megaspore
- anthers make pollen
- 
- 
- 
- 
- 
- 



7.1

# Flowers to Seeds

\* On pg. 40, you will start your reading, but wait - read the questions on page 45 first so you know the information you are responsible for. Respond thoroughly and completely. Remember, you should always respond as if you are teaching.

\* skip a line between @ ? . (Complete 1-6)

petal- visible "showy" part, usually, colorfull, but can be white.

ovary- contains ovules where eggs reside

stamen- spindly structure reaching up w/ anther on the tip

anthere- male part that produces pollen grains. Inside pollen grain is the male sperm.

pistil- a shoot that has stigma. Stigma are that portions of pistal.

Sepal- where the flower attaches to the plant